

DISCOVERARCH

ARCHIVEDA

DESIGN BEYOND BOOKS



"A person who won't read has no advantage over one who can't read."

Mark Twain, American writer.



INTRODUCTION

Books, as vehicles of knowledge, have helped humanity evolve over the ages. To make information more accessible, books have been transformed into digital, audio, and visual formats. Despite these efforts, books remain inaccessible to many communities globally. Bridging the gap between education and isolated communities is essential.



A library serves as an educational incubator, a space that not only provides conventional knowledge but also encourages users to interact, share ideas, and grow together. Rather than accepting urban migration as inevitable, a library can be designed to restore dignity and induce development.

Can we envision a 21st-century library that encourages exploration, creation, and collaboration among communities? It's time we ignite a new age of learning.



CHALLENGE

Participants are tasked with designing a modern, fire-safe library featuring multifunctional spaces for all ages. The library should include traditional reading materials and modern formats like e-books, audiobooks, and audiovisual books. Crucially, the design must incorporate fire safety measures, such as fire-resistant materials, emergency exits, fire suppression systems, and clear evacuation plans.

SITE SELECTION

Participants should select a site within an urban or rural context, with a maximum area of 1 acre. The chosen site should have the potential to transform into a vibrant public space that promotes communal activities, gatherings, and interactions, significantly benefiting from educational and self-learning facilities. The site should be in dire need of change that can be well-achieved through a well-designed, fire-safe library.

Participants must refer to the locally applicable bye-laws and building codes for their chosen site. In the absence of local bye-laws, refer to the National Building Code (NBC). Provide references to these regulations in your design sheets to ensure compliance and feasibility.

The site context should be justified with a clear rationale for its selection, demonstrating how the proposed library will meet the educational and communal needs of the area while incorporating fire safety measures and sustainable design principles.



JUDGING CRITERIA

ARCHITECTURAL AESTHETICS

The library's look and feel matters. From the colors to the layout works in harmony, making it not just nice to look at but also easy to use.

INNOVATIVE FEATURES

Integrate innovative architectural elements and sustainable features, to showcase your creativity.

SPATIAL PLANNING

Optimize the use of space within the library to provide functional, comfortable, and aesthetically pleasing spaces.



PRESENTATION QUALITY

Pay careful attention to the clarity, visual appeal, and storytelling aspect of your sheets.

EARN BONUS POINTS

FIRE-SAFE MATERIALS

Utilize fire-resistant materials and construction methods to enhance the safety of the library.

EMERGENCY EXITS

Design clear and accessible emergency exits to ensure the safe evacuation of all users.

REFUGE AREA

Evaluate the inclusion of safe refuge areas within the design to provide a temporary haven for users during a fire emergency.

SUSTAINABLE DESIGN

Incorporate sustainable design principles such as energy-efficient systems, green roofs, to reduce the environmental impact of the building.



THE SIGNIFICANCE OF FSAI AND ASHRAE

Emphasize Fire-Resistant Materials: Encourage the use of fire-resistant materials in the designs. Participants should consider the selection of materials that can withstand fires, such as fire-resistant cladding, insulation, and roofing.

Response Time and Fire Safety Access: In addition to the aesthetic and safety aspects, we encourage participants to prioritize quick access for emergency services, especially in fire safety scenarios. Design should facilitate easy entry for fire trucks and personnel, aiding efficient fire management.

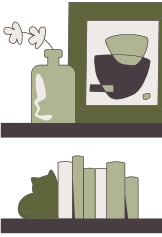
Pathways and Accessibility: Participants are encouraged to carefully plan the layout of the dream home and its surroundings to ensure that there are clear and unobstructed pathways for firefighters.

Energy Efficiency: Implementing ASHRAE standards ensures energy-efficient building practices, reducing overall energy consumption.

Indoor Air Quality: Consider ASHRAE guidelines to maintain high indoor air quality, promoting a healthier environment for library users.

Sustainable Building Practices: Following ASHRAE standards to make sustainable building minimizing environmental impact and reduce the library's carbon footprint.

Green and Resilient Design: Participants should try to use ASHRAE guidelines, integrating energy-efficient systems and sustainable practices to create a green and resilient library for the future.



SUBMISSION

- The project must be submitted using two (2) A1-sized sheets, whether in digital or hand-drawn format.
- Floor plans to should show furniture arrangements.
- Materials and innovative construction techniques
- Site plan should show the orientation and connectivity of the building
- Elevations and sections of the building.
- All drawings should be presented at a scale

SCHEDULE



Competition Starts



Early Bird Registration Ends



Standard Registration Ends



Submission Deadline



Winner Announcement



PRIZES

PRIZES WORTH 10000 RS

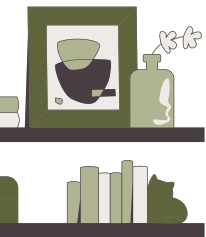
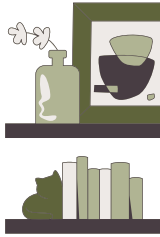


10 HONOURABLE MENTIONS

HONOURABLE MENTIONS WILL GET APPRECIATION CERTIFICATES AND WILL BE PUBLISHED ON DISCOVERARCH WEBSITE

PARTICIPATION CERTIFICATES

To show our appreciation, all the participants would receive a participation certificate.



RULES AND REGULATION

1. Eligibility Criteria:

Only architecture students are eligible to participate.

Proof of current academic standing will be required at the time of winner declaration.

2. Submission Deadline:

The deadline for all submissions is Dec25, 2024.

Entries received after this date will not be considered.

3. Registration Fee:

The registration fee is non-refundable. Participants are required to complete the registration process before the specified deadline to be eligible for the competition.

4. Communication Language:

English is the designated language for all communication related to the competition. Participants should ensure that all written communication, including project descriptions, is in English.

5. Design Explanation for Selected Participants:

Selected participants will be required to provide a detailed explanation of their design to the jury. Presentations must be done using a laptop, presentations by mobile devices will not be accepted.

6. Competition Schedule Adjustment:

DiscoverArch retains the right to adjust the competition schedule. Participants will be notified promptly of any changes.

ADDITIONAL OPPORTUNITY

All participants will have the opportunity to attend live webinars on fire, security, and architecture conducted by industry experts. Participants who attend the webinar will also receive a certificate of participation in this educational event.



KAPURTHALA-HOSHIARPUR
SUB-CENTRE (PUNJAB CHAPTER)



Fire & Security
Association of India
Chandigarh Chapter

